

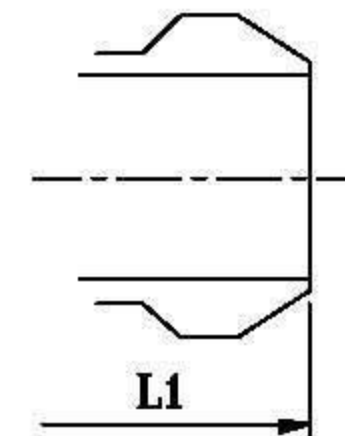
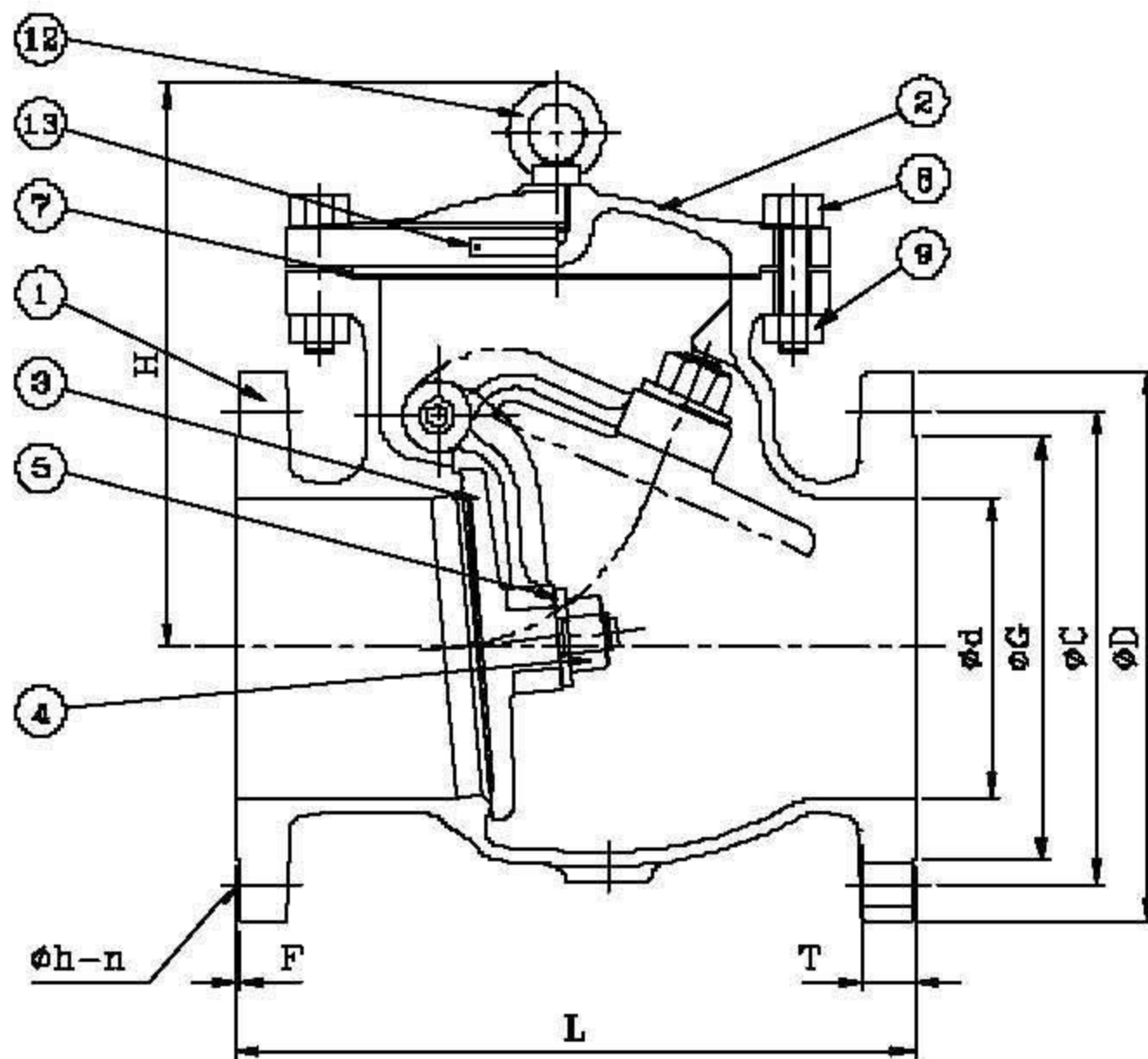
CAST STAINLESS STEEL CHECK VALVE – ANSI CLASS 150

DESIGN DESCRIPTION:

- BOLTED COVER
- SWING TYPE
- FOR HORIZONTAL OR VERTICAL LINES
- INTEGRAL SEAT
- FLANGED ENDS
- BUTTWELDING ENDS

APPLICABLE STANDARDS:

- STEEL VALVES, ANSI B16.34
- FACE TO FACE, ANSI B16.10
- END FLANGES, ANSI B16.5
- BUTTWELDING ENDS, ANSI B16.25
- INSPECTION AND TEST, API 598



Buttwelding Ends

PARTS AND MATERIAL (ASTM)

NO.	PARTS NAME	MATERIALS		
		CF8	CF8M	CF3M
1	Body	A351-CF8	A351-CF8M	A351-CF3M
2	Cover	A351-CF8	A351-CF8M	A351-CF3M
3	Disc	A351-CF8	A351-CF8M	A351-CF3M
4	Disc Nut	A194-8	A194-8M	A194-8M
5	Disc Washer	A276-304	A276-316	A276-316L
6	Swing Arm	A351-CF8	A351-CF8M	A351-CF3M
7	Gasket	PTFE / Grafoil+316 Sheet		
8	Cover Bolt	A193-B8		
9	Cover Bolt Nut	A194-8		
10	Plug	A276-304	A276-316	A276-316L
11	Hinge Pin	A276-304	A276-316	A276-316L
12	Eye Bolt	A36+Zn Plate		
13	Name Plate	A666-304		

OTHER MATERIALS ARE AVAILABLE UPON REQUEST.

TEST PRESSURE TO API 598

PSIG		
SHELL TEST (water)	SEAT TEST (water)	SEAT TEST (air)
450 (32 kg/cm ²)	314 (22 kg/cm ²)	80 (6 kg/cm ²)

DIMENSION TABLE:

DN	NPS	ϕd	L & L1	H	T	F	ϕD	ϕC	ϕG	ϕh	n	WT.(Kg)
15	1/2	12.7	108	71	10.0	1.6	88.9	60.5	35.1	16.0	4	5
20	3/4	19.0	117	71	10.5	1.6	98.6	69.9	43.0	16.0	4	5
25	1	25.4	127	76	11.2	1.6	108.0	79.2	50.8	16.0	4	6
40	1 1/2	38.1	165	122	14.3	1.6	127.0	98.6	73.2	16.0	4	7.5
50	2	50.8	203	142	15.8	1.6	152.4	120.7	92.0	19.0	4	11
65	2 1/2	63.5	216	148	17.5	1.6	177.8	139.7	104.7	19.0	4	16
80	3	76.2	241	161	19.1	1.6	190.5	152.4	127.0	19.0	4	21
100	4	101.6	292	187	23.9	1.6	228.6	190.5	157.2	19.0	8	33
150	6	152.4	356	287	25.4	1.6	279.4	241.3	215.9	22.3	8	55
200	8	203.2	495	316	28.5	1.6	342.9	298.5	269.8	22.3	8	94
250	10	254.0	622	393	30.3	1.6	406.4	362.0	323.9	25.4	12	168
300	12	304.8	699	428	31.8	1.6	482.6	431.8	381.0	25.4	12	238
350	14	336.6	787	453	35.1	1.6	533.4	476.3	412.8	28.5	12	366
400	16	387.4	864	490	36.6	1.6	596.9	539.8	469.9	28.5	16	522
450	18	438.2	978	520	39.6	1.6	635.0	577.9	533.4	31.8	16	725

